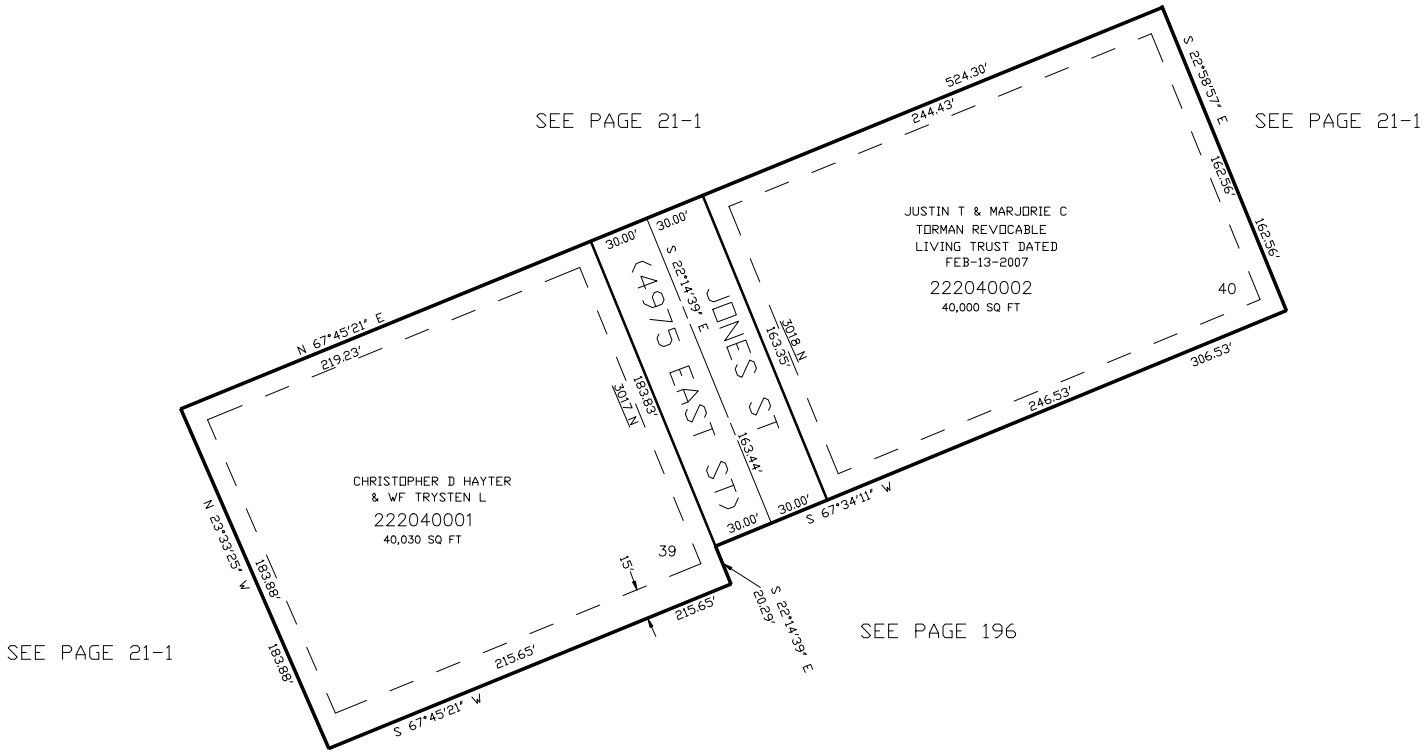


PART OF THE W.1/2, OF SECTION 27, T.7N., R.1E., S.L.B. & M.
MOUNTAIN VIEW ESTATES NO. 7

IN WEBER COUNTY
SCALE 1" = 50'

TAXING UNIT: 28



FOR COMPLETE ENG DATA SEE
ORIGINAL DEDICATION PLAT IN
BOOK 58, PAGE 05 OF RECORDS.